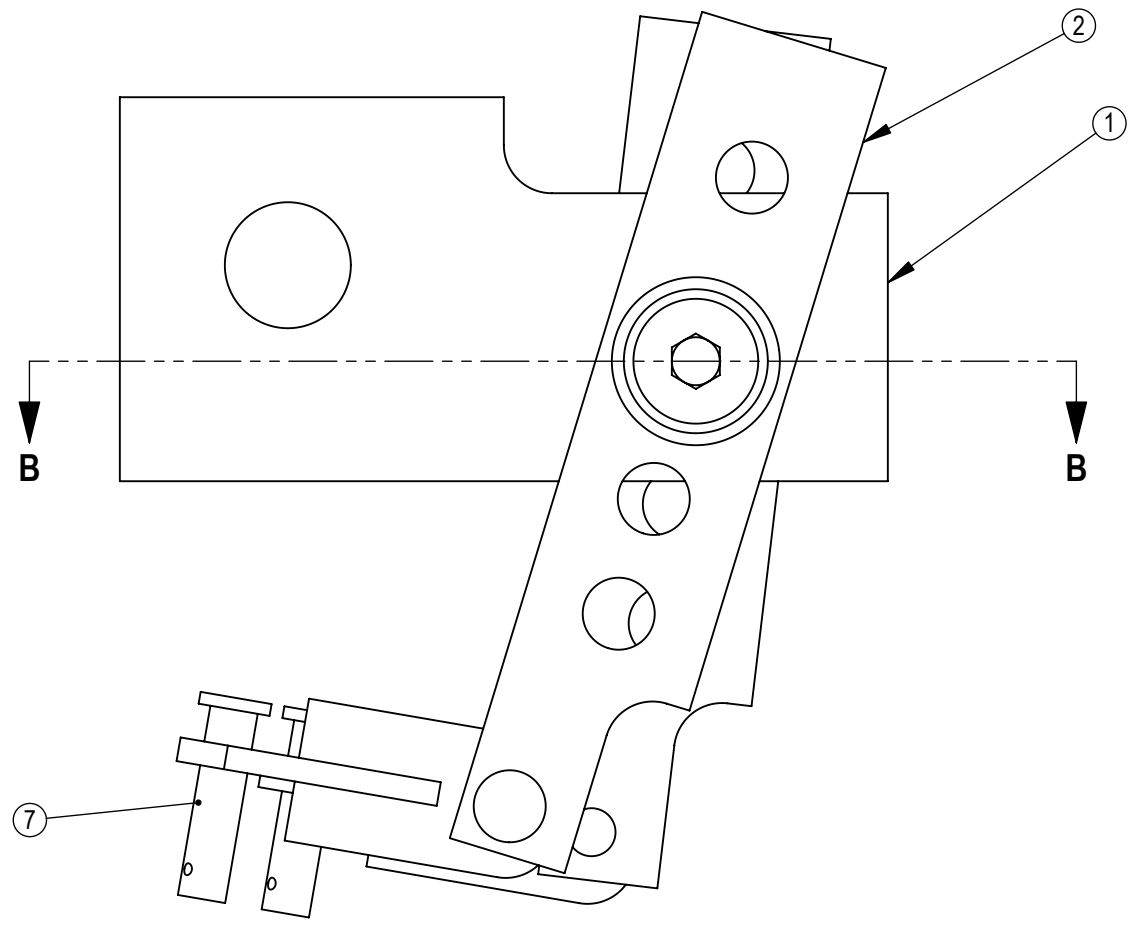
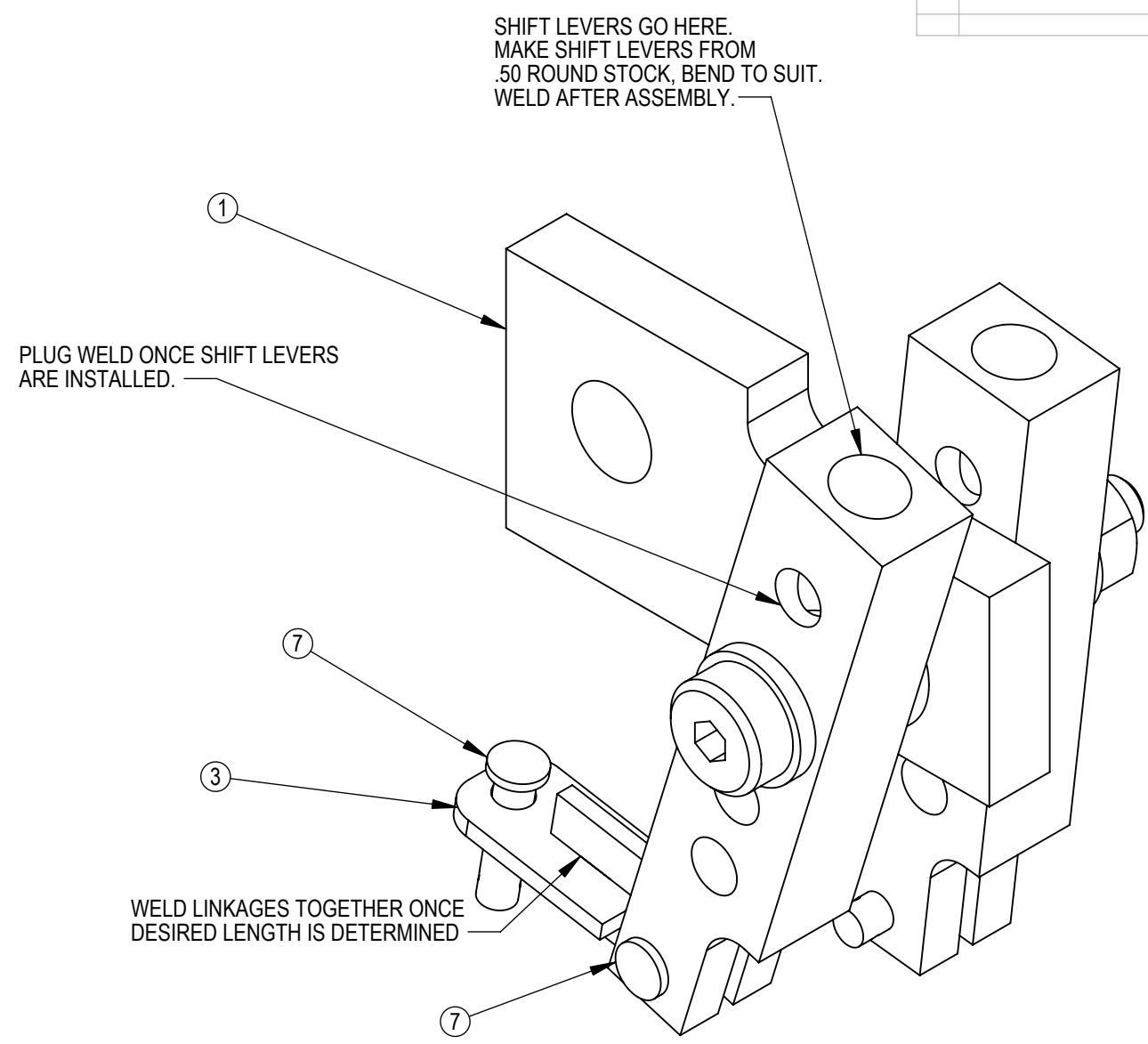
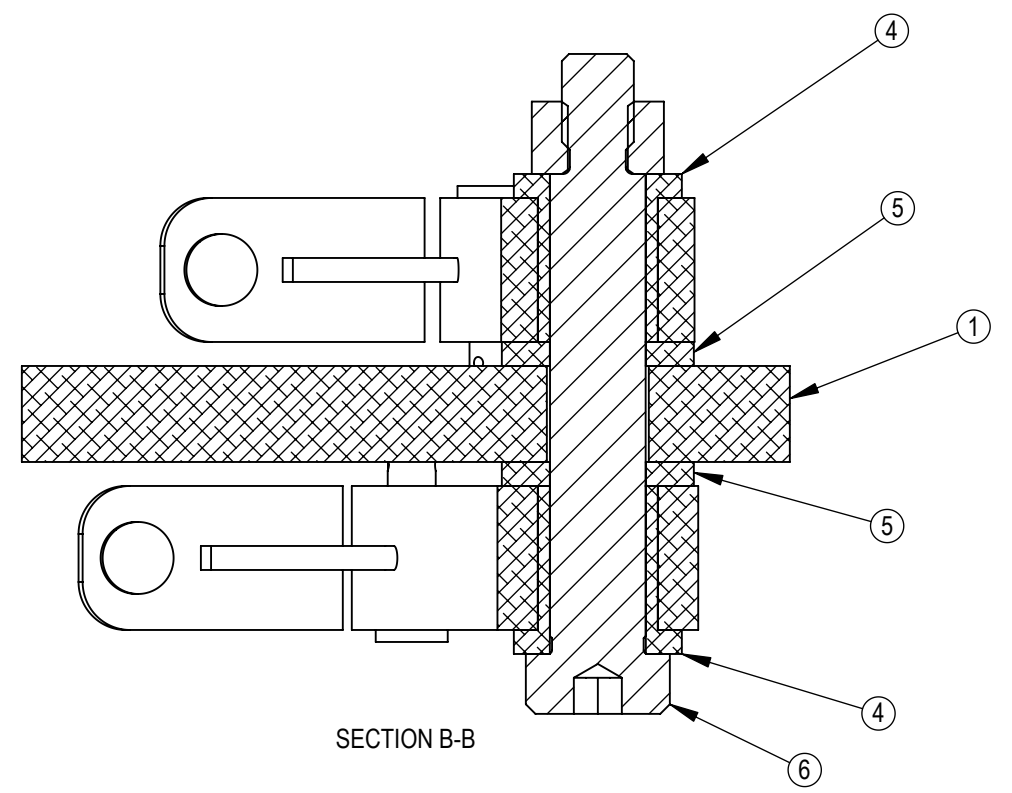


REVISIONS			
REV.	DESCRIPTION	DATE	REV BY



ITEM NO.	QTY.	PART NUMBER	DESCRIPTION	MANUFACTURER
1	1	MOUNTING PLATE		
2	2	SHIFT LEVER BASE		
3	4	LINKAGE		
4	2	2938T14	FLANGED BEARING, .50 ID X .625 OD X 1.00	MCMASTER CARR
5	2	5906K512	PLAIN BEARING, .50 ID X .750 OD X .0625	MCMASTER CARR
6	1	91259A722	SHOULDER BOLT, .50 X 2.50 LONG	MCMASTER CARR
7	4	97245A631	COTTER PIN, 1/4" DIA X 1.00	MCMASTER CARR
8	1	NYLOCK NUT	3/8-16 NYLOCK NUT	

UNLESS OTHERWISE SPECIFIED,
DIMENSIONS ARE IN IN (mm).
TOLERANCES ARE:

DISTANCES	ANGLES
X ± .1 (2.5)	± 5°
X ± .04 (1.01)	± .5°
.XX ± .01 (0.25)	± .05°
.XXX ± .005 (0.127)	± .005°
.XXXX ± .0005 (0.013)	± .0005°

MATERIAL

FINISH

WWW.AZROCKCRAWLER.COM

APPROVALS	DATE
DRAWN	
CHECKED	
RESP ENGINEER	

SIZE	DRAWING NO.	REV.
B	Twinstick	
SCALE	1:1	SHEET 1 OF 2

